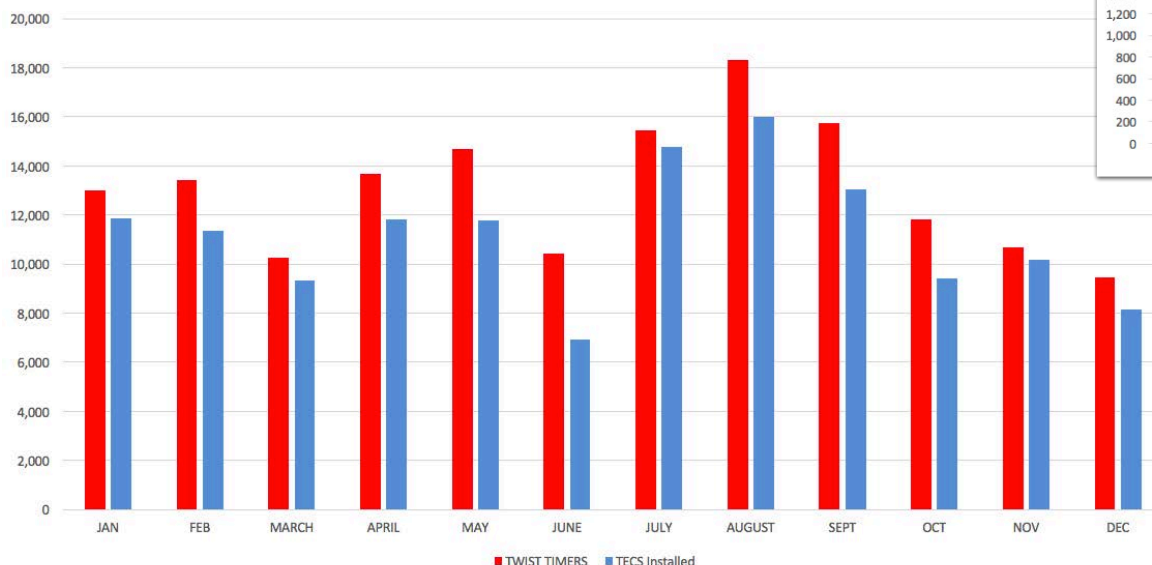


# Somerset High School in the Bellflower Unified School District

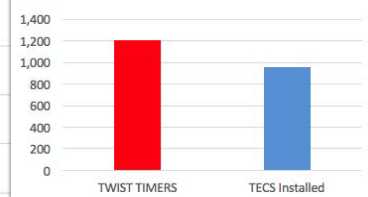
Total kWh Difference  
 Percentage kWh savings  
 kWh Day Difference  
 Total Demand Difference  
 Percentage Demand Savings  
 Total Money Difference

Jan	Feb	March	April	May	June	July	Aug	Sep	Oct	Nov	Dec	Total
(1,114.67)	(2,093.33)	(912.00)	(1,859.25)	(2,911.50)	(3,504.75)	(674.33)	(2,324.00)	(2,702.00)	(2,437.67)	(518.67)	(1,279.67)	(22,331.83)
-8.6%	-15.6%	-8.9%	-13.6%	-19.8%	-33.6%	-4.4%	-12.7%	-17.2%	-20.6%	-4.9%	-13.5%	-17.3%
(342.56)	(340.88)	(233.84)	(385.05)	(374.65)	(279.95)	(18.15)	(100.03)	(45.78)	(70.45)	(66.33)	(28.82)	(2,286.50)
(23.00)	(12.33)	(12.67)	(17.50)	(11.25)	(47.50)	(29.33)	(29.67)	(8.67)	(7.33)	(22.33)	(31.33)	(252.92)
-24.7%	-13.7%	-15.3%	-15.3%	-11.1%	-49.2%	-25.7%	-22.5%	-7.4%	-7.9%	-28.2%	-33.2%	-25.4%
(\$202.18)	(\$185.91)	(\$266.77)	(\$255.33)	(\$363.14)	(\$2,253.56)	(\$420.41)	(\$776.87)	(\$665.26)	(\$212.64)	(\$20.90)	(\$458.75)	(\$6,081.73)

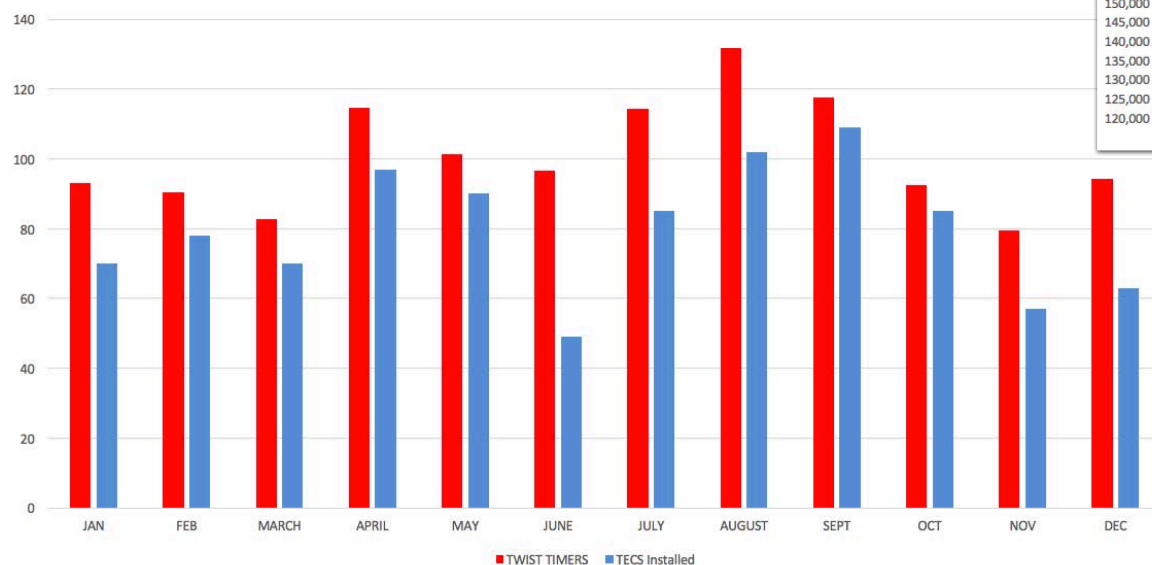
Total Average kWh



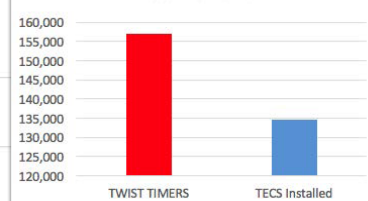
Total kWh Used



Total Average Demand



Total Demand



\* Savings are compared to a 3 year average of energy data before TECS was installed  
 \* Somerset High School was using twist timers prior to TECS being installed  
 \* TECS is installed on 23 HVAC units